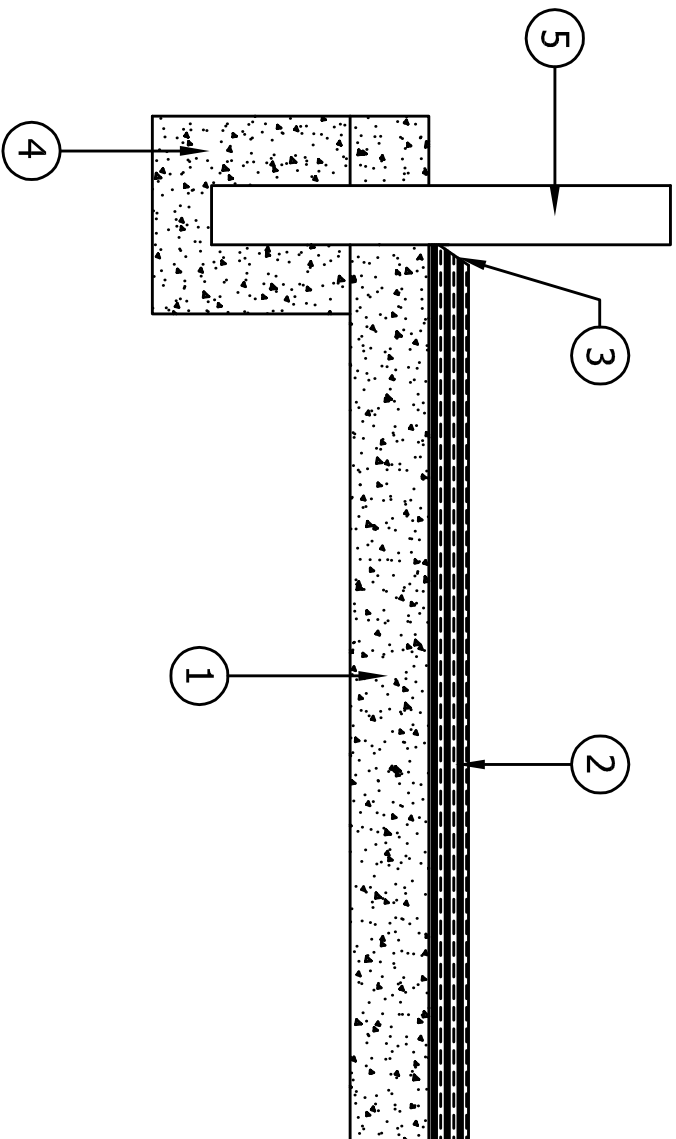




Robertson
Recreational Surfaces
A **FLA CORE** Company



KEYNOTES

- ① SUB-BASE OPTIONS PER ADA GUIDELINES: (1) CONCRETE - MINIMUM OF 3'-4" AT A MINIMUM 2500 PSI. MUST CURE FOR 7 DAYS PRIOR TO CUSHION LAYER. MUST CURE FOR 28 DAYS IF WEAR COURSE IS TO BE APPLIED DIRECTLY TO CONCRETE SURFACE. (2) ASPHALT - MUST CURE A MINIMUM OF 14 DAYS, POWER WASHED
- ② WEAR COURSE - 1/2" INCH MINIMUM THICKNESS OVER PRIMED CONCRETE / ASPHALT
- ③ ROLLED EDGE TURN-DOWN OF WEAR COURSE
- ④ POST FOOTING
- ⑤ FENCE POST OR POLE

ROBERTSON RECREATIONAL SERVICES
ADDRESS: 2414 W. 12TH STREET SUITE 5
TEMPE, ARIZONA 85281
PHONE: 800-858-0519
WEBSITE: WWW.TOTURF.COM

DETAIL-8
1/2" PIP OVER CONCRETE / ASPHALT
(ROLLED EDGE AT FENCE / PERIMETER)

DATE: 09-13-2016
REVISION DATE: 12-12-2016
SCALE: N.T.S.
DRAWN BY: ATL
SIGNED/APPROVED: