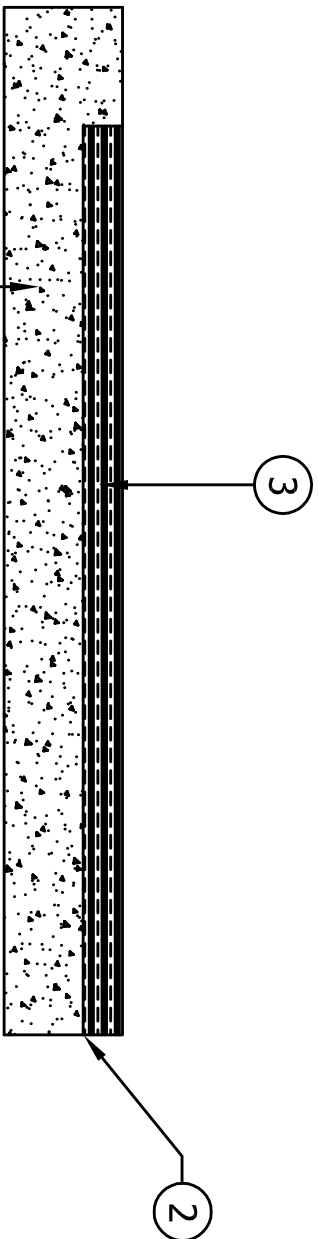




**Robertson**  
Recreational Surfaces  
A **FLACORE** Company



#### KEYNOTES

- ① SUB-BASE OPTIONS PER ADA GUIDELINES: (1) CONCRETE - MINIMUM OF 3-4" AT A 2500 PSI. MUST CURE FOR 7 DAYS PRIOR TO CUSHION LAYER. MUST CURE FOR 28 DAYS IF WEAR COURSE IS TO BE APPLIED DIRECTLY TO CONCRETE SURFACE
- ② DIAMOND GRIND CONCRETE AND SEAL WITH A 2-PART EPOXY COATING
- ③ SPLASH TREAD WEAR COURSE - 3/8" INCH MINIMUM THICKNESS

ROBERTSON RECREATIONAL SERVICES  
ADDRESS: 2414 W. 12TH STREET SUITE 5  
TEMPE, ARIZONA 85281  
PHONE: 800-858-0619  
WEBSITE: WWW.TOTURF.COM

**DETAIL-12**  
SPLASH TREAD OVER CONCRETE  
(WATER PAD)

DATE: 09-13-2016  
REVISION DATE: 12-12-2016  
SCALE: N.T.S.  
DRAWN BY: ATL  
SIGNED/APPROVED: